

1205, 1605 & 1608 Belt Feeders

# SPECIFICATIONS

1205, 1605, & 1608  
BELT FEEDERS



STANDARD Equipment	1205	1605	1608
Direction	Forward (material moving toward drive end)		
Overall Lengths Max length of individual bed section: 10' (3.05mm); Bolt sections together for lengths > 10' (3.05mm); Intermediate lengths are possible by field cutting	20' - 120' (6.1 - 36.57m) 10" (3.05m) increments	20' - 100' (6.1 - 30.48m) 10" (3.05m) increments	20' - 200' (6.1 - 60.96m) 10" (3.05m) increments
Frame concave, open center, 16 ga., powder coated steel	Depth: 6-1/2" (165mm) Width: 13" (330mm)	Depth: 6-1/2" (165mm) Width: 17" (435mm)	Depth: 6-1/2" (165mm) Width: 17" (435mm)
Belt Width	12" (305mm)	16" (406mm)	
Belt Black, PVC, 120 COS *ask about other options	Smooth; Standard or cold temp		
Belt Speed dependent on drive selected	65-370 FPM		260-390 FPM
Drive Mount	Mount in various positions to match installation requirements		
Drive Motors	2 - 3 HP - 1 or 3 phase electric motor drive		3 - 5 HP - 1 or 3 phase electric motor drive
Drive Pulley (diameter) Crowned, steel, rubber lagged	5" (127mm)		8" (203mm)
Tail Pulley (diameter) Finned, steel	5" (127mm)		
Bearings Long-life, sealed, prelubricated, greasable	1-1/4" (31.75mm) - Idler and Drive End		
Belt Take-up	Screw-type take-up at tail pulley		
Load Capacity	<56 ft <sup>3</sup> /min (1.58m <sup>3</sup> /min) 1000 lb/min (454 kg/min)	<90 ft <sup>3</sup> /min (2.55m <sup>3</sup> /min) 1600 lb/min (726 kg/min)	<95 ft <sup>3</sup> /min (2.69m <sup>3</sup> /min) 1690 lb/min (767 kg/min)
Support Span	≤ 20' (6.096m) conveying portion; ≤ 10' (3.05m) between supports when used as feeder		
Electrical Controls	Customer supplied, except optional equipment		
Assembly	Conveyor is shipped unassembled		
OPTIONAL Equipment	1205	1605	1608
Covers	10' (3.05m) lengths; 20 ga. powder coated		
Loading Hoppers	Material is funneled into conveyor trough		
End Spout	Directs material discharge		
Belt Wipers	Urethane wiper blade for cleaning tops of belt		
Magnets	Ferrous metals are captured as it travels over the magnets		
Adjustable Elbow	0 - 30°		
Convey Sides	Positions material and seals edges to prevent material from getting under belt		
Plow-Off (stationary)	n/a	Designate location on conveyor to plow-off in one direction	
Plow-Off (moveable)	One-way & Two-way straight blade	One-way & Two-way straight blade; One-way V-Plow	
Electrical Control	Multi-Lot tripper for 2-way plow control. Plow drive control box		

**CAUTION:** Never operate Patz equipment without all shields and guards in place. *Safety Is No Accident.* Before operating any piece of equipment, be sure to read and understand the operator's manual. This manual should be kept with the machine at all times. Additionally, make sure all safety shields and devices are functioning properly and are securely in place.

For some photos in this brochure, guards were removed for photographic purposes only to allow viewing of the equipment features. Before operating equipment, all guards must be in place. Because Patz continually improves and updates products, Patz reserves the right to change the construction of machines or attachments or any part thereof without incurring any obligation to make like changes on Patz machines, or attachments previously delivered. Specifications and prices subject to change without notice.



SIMPLE, RELIABLE,  
& FLEXIBLE

- ✓High capacity for fast feeding.
- ✓Customize to fit your needs.
- ✓Economical way to automate feeding

INVESTMENT FLEXIBILITY  
Ask Dealer for Financing Details



1205, 1605, & 1608 Livestock Belt Feeders

# MODELS

1205, 1605, & 1608 Livestock Belt Feeders

# FEATURES

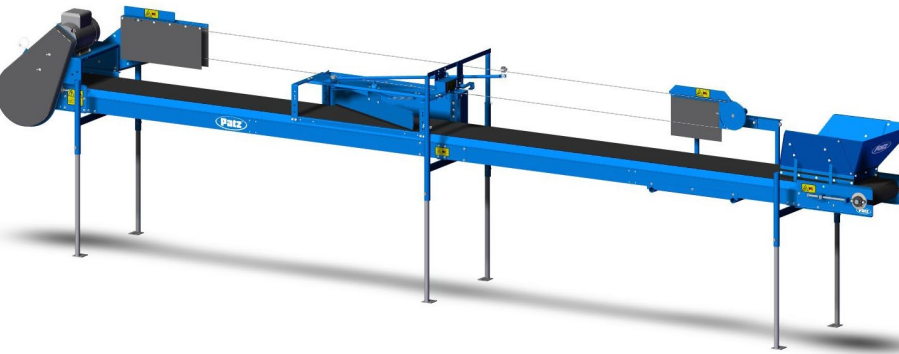
## 1205



Shown: 2-MOTOR, 1 WAY PLOW DRIVE FEEDER

- 4 Belt Speeds
- Forward: ≤120' (36.58m)  
*(material moving toward drive end)*
- 5" Drive Pulley
- 12" Conveyor Width
- Drive Options: Double V-Belt, Direct Drive, or Hydrdraulic Motor
- Adjustable elbow or straight-line one-way conveying
- Options: Idler end and central loading hopper, belt wiper, stand

## 1605



Shown: 1-MOTOR, CHAIN DRIVE FEEDER

- 4 Belt Speeds
- Forward: ≤100' (30.48m)  
*(material moving toward drive end)*
- 5" Drive Pulley
- 16" Conveyor Width
- Drive Options: Double V-Belt or Direct Drive
- Adjustable elbow or straight-line one-way conveying and plow-off
- Options: Idler end and central loading hopper, belt wiper, stand

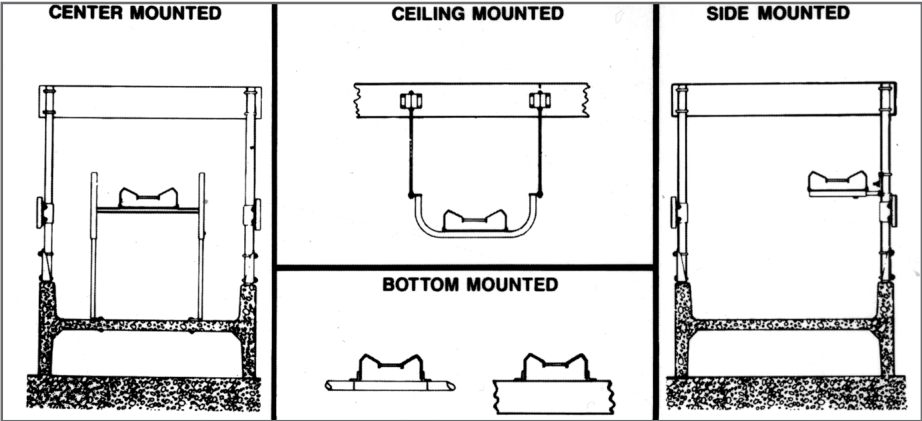
## 1608



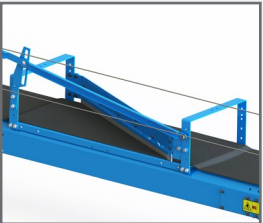
Shown: 2-MOTOR DRIVE FEEDER

- 2 Belt Speeds
- Forward: ≤200' (60.96m)  
*(material moving toward drive end)*
- 8" Drive Pulley
- 16" Conveyor Width
- Heavy-duty 8" steel drive pulley is crowned and rubber lagged for positive traction
- Adjustable elbow or straight-line one-way conveying and plow-off
- Options: Idler end and central loading hopper, belt wiper, and stand

### MOUNTING OPTIONS: *Center, Bottom, Ceiling, Sides*



### PLOWS

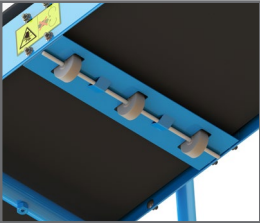


One-way Floating Plow drops feed off one side of feeder only. A 2-motor drive allows different rations to be fed to two lots.

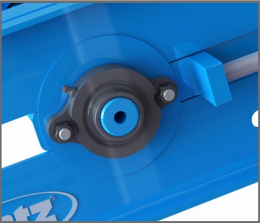
### STANDARD FEATURES



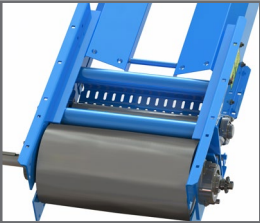
Open pan design provides for extra capacity and reduces belt friction for lower power requirements. Fin pulley helps avoid feed build-up.



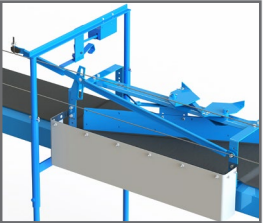
Return wheels carry belt on return bottom to reduce friction for longer belt life and less strain on the drive system.



Precision bearings are sealed and greasable, ensuring a long-life and trouble-free, continuous duty.

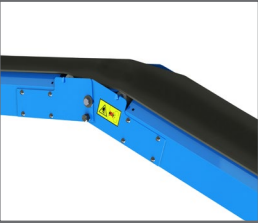


Convenient adjustment for belt tension and tracking. A 5/8" screw provides up to 20" of belt take-up. The pulley is finned for clean-out.

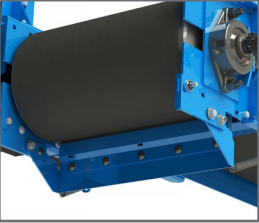


Two-way Floating Plow drops feed off both sides of feeder one side at a time. A 2-motor drive and plow drive assembly allows different rations to be fed to four lots. .

### OPTIONAL FEATURES



Elevate material and then convey level. When passing the **elbow**, the belt stays concave with a deep trough for maximum capacity.



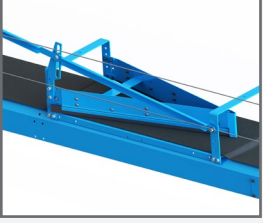
Belt wiper urethane blade cleans the top surface of smooth belting.



Loading hopper controls material loading and helps prevent spillage. Available for idler end and central hopper.



Covers available to protect material and conveyor from wind, rain and contaminants.



One-way V-Plow drops feed off both sides of feeder simultaneously. Available on 1605 & 1608 models.