

1200 Series II TRAILER SINGLE SCREW VERTICAL MIXERS



THE MOST TRUSTED MIXER THE MOST VALUED MIX

- ✓ **Consistent** TMR beyond demo and after the sale - precision feeding for service life.
- ✓ **Capacity** with Balanced Flow™ Technology - no dead spots at struck height!
- ✓ **Cleanout** minimizes residue carryover for balanced rations, batch integrity, and nutrient cost control.

FEEDINGSOLUTIONS
www.patzcorp.com

FEEDING IS BELIEVING!
Schedule a DEMO Today!

INVESTMENT FLEXIBILITY
Ask Dealer for Financing Details



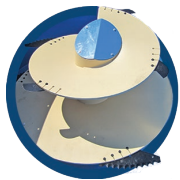
1200 Series II Single Screw Vertical Mixer

BALANCED FLOW™ TECHNOLOGY

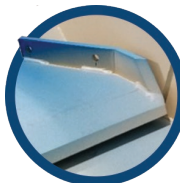


PROVEN, PATENTED PRODUCTIVITY

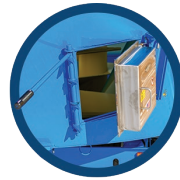
Patz exclusive design engineering balances horizontal processing and vertical mixing. The continuous, controlled motion ensures a thorough and consistent mix with superior clean-out.



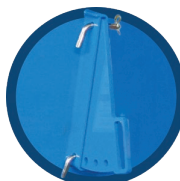
1. Precision-fitted, AR400 - Component Vortex® screw with cupped flighting creates the Patz signature rolling-boil for faster mixing and high-volume feed flow.



2. Welded, AR400 shear plow wing tight tolerance cleans the tub sidewall for maximum mixing action and cleanout with minimal torque.



3. The original, stainless steel tub-mounted magnet with patented, reticulum retention design removes tramp metal without restricting feed flow. Feed safer and inspect frequently with quick-opening access.



4. Reversible restrictor plates are located on front left and right rear of tub. Adjust in or out to control forage flow and particle size.



5. Surface-primed, overlapping steel tub-ends and sidewalls with reinforced exterior anchor and interior seam welds; sand-blasted and primer finish with high-gloss hardened, premium paint.



1200 Series II Single Screw Vertical Mixer

FEED THE POTENTIAL™

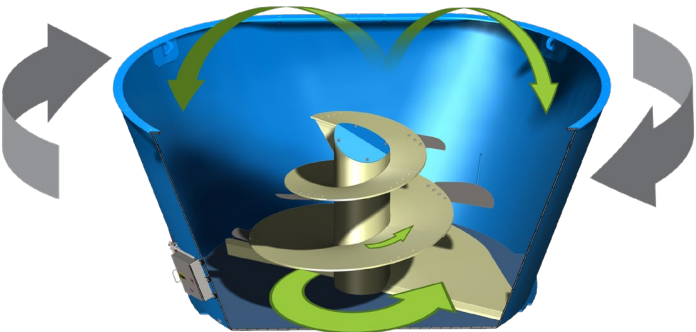
THE PROFESSIONAL PRODUCER'S CHOICE IN TMR

Feed is 65% of operating costs, make every ingredient count with a consistent TMR from start to finish.

- Feed a wider variety of ingredients.
- Maximize dietary fiber with large squares and wet or dry standard and high-density round bales.
- Batch size flexibility for special needs or pre- and post-fresh groups.



UNLEASH THE TOTAL MIX POTENTIAL OF YOUR FEED, YOUR HERD, AND YOUR MANAGEMENT WITH PATZ VERTICAL MIXERS!



Gray arrows indicate direction of screw rotation.
Green arrows indicate Balanced Flow™ of feed



- Highest rated consistency throughout service life in the industry in independent TMR audits!
- Minimize sorting and reduce refusals with a palatable, well-blended TMR.
- Increase dry matter intake (DMI) with uniform theoretical length of cut (TLC).
- Improve TDN utilization by preserving physically effective fiber (peNDF) integrity.
- Ensure precision feeding program accuracy with Patz superior cleanout!

1200 Series II Single Screw Vertical Mixer

Standard Features

Units Available: 420, 420XH, 500, 500XH, 615, & 615XH cu. ft. (11.89, 14.16, and 17.41 m³)



Singles
420 cu. ft. - 103"
500 cu. ft. - 112"
615 cu. ft. - 125"

Duals
420 cu. ft. - 97"
500 cu. ft. - 106 5/16"
615 cu. ft. - 119 5/16"

2-Speed Powershift

2-Speed Manual

HIGH EFFICIENCY DRIVETRAIN ENGINEERING

Overload Protected, Poly-Shielded ASABE/ISO/CE Safety Guarded/Harnessed Driveline. Available in:

- 6 Spline 1 3/8 inch 540/1000 RPM PTO; or
- 21 Spline 1 3/8 inch 1000 RPM PTO; or
- 20 Spline 1 3/4 inch 1000 RPM PTO

- 1 Standard Direct Drive with hinge-guarded, frame mounted flange bearing to minimize vibration.

- Primary Drive Line with serviceable Shear Bolt Clutch PTO protects tractors from mixer shock loads.
- Independent Secondary Drive Line

- 2 Optional 2-Speed Transmission backed by 5-Year Pro-Rated Warranty:

- Primary Drive Line with Dual-Yoked, Constant Velocity (CV) Joint PTO minimize vibration during in-motion pivot operation.
- Choice of:
 - Manual Stop-and-Shift, Hi-Low, Single Reduction Gear box with optional Cable Remote (Shown).
 - First in its class PowerShift Transmission allows operator to shift under full power. When disengaged, transmission defaults to Low. Includes wireless remote and LED status indicator.
 - Independent secondary driveline with Secondary Shear Bolt Cutch.

- 3 Heavy Duty 90° Planetary Gearbox backed by a 5-Year Pro-Rated Warranty

- 4 Independent oil reservoir with dip-stick cap to monitor planetary gearbox oil level, centrally located for routine maintenance.

DURABLE TUB AND TRAILER DESIGN

- 5 1/2 inch (13 mm) - Reinforced, Welded Gusset Top Ring.

- 6 1/4 inch (6 mm) or 3/8 inch (9 mm) XH - Overlapping, surface-primed, 58-80K PSI Ultimate Tensile Strength (UTS) sidewalls reinforced with exterior anchor and interior seam welds, finished with high-gloss hardened, premium paint.

- 7 Reversible restrictor plates are located on front left and right rear of tub. Adjust in or out to control forage flow and particle size.

- 8 Integrally formed, reinforced tub floor provides the solid structure for mixer construction minimizing flex and fatigue:

- 3/4 inch (16 mm) - Solid Steel **Base Plate** with Beveled Sidewall Foundation Joist
- 1/2 inch (13 mm) - Welded Steel **Cantilever Cross Members** evenly distribute orbital mixing torque
- 3/4 inch (19 mm) Welded Steel Sectional **Sub-Floor** forms a rigid 1 1/2 inch (38 mm) Planetary Gearbox Mount.

- 9 4 Independent **Weigh Bars** anchor tub to trailer for accuracy, serviceability, and reliability.

- 10 1/4 inch x 4 inch x 8 inch (6.4 mm x 101.6 mm x 203 mm) Rectangular **Steel Tube Frame** equalizes load weight from hitch to taillight.

- 11 **Underslung "A" Frame Tongue** design provides 32 inches (81 cm) of strengthened load carrying capacity and turning torsion with a narrow turning radius to safely manage tongue weight.

- 12 Undercarriage options include choice of:

- **Split Duals** with (4) 45/70 R 19.5 Tubeless Implement Tires fitted on heavy duty hubs fitted twin spindles on independent axles. The inline design allows for individual tire service, optimal turning radius, and minimum tire scrub.
- **Conventional Duals** with (4) 45/70 R 19.5 Tubeless Implement Tires fitted on heavy duty hubs with independent axle/spindles. Designed with tire placement outside the trailer frame for service ease while maintaining low profile.
- **Super Single Flotation Tire** (2) 445/50R 22.5 Flotation tires fitted on heavy duty hubs with independent axle/spindles. Designed with tire placement outside the trailer frame for service ease and improved off-road performance.

- 13 Safely view Patz exclusive mixing action from front viewing platform with treaded ladder, hydraulic line stowage, and auxiliary indicator mount.

- 14 Recessed LED taillights with 7-pin ISO connector for safe, visible transport.

Some variations may apply to standard and optional equipment for each unit size. Please refer to specifications page for more information.

1200 Series II Single Screw Vertical Mixer

Optional Features

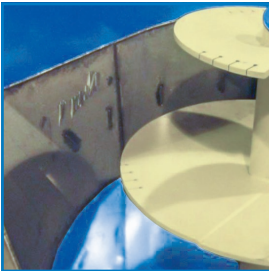


FLAT W/INCLINE EXTENSION

Adjustable hydraulic positioning, RH and LH, cross conveyor extensions may extend 41 or 53 inches.

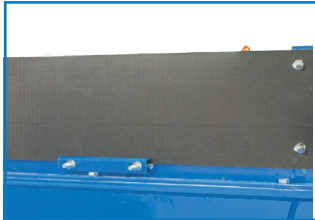
FRONT DISCHARGE CONVEYOR

Tub-mounted cross conveyors weigh material on conveyor; Trailer-mounted conveyors are unweighed. Flat cross conveyor include RH, LH, reversing, and sliding discharge options.



TUB LINER

Choice of 3/16 inch thick steel or 11 gauge stainless steel for additional wear protection of mixer tub.

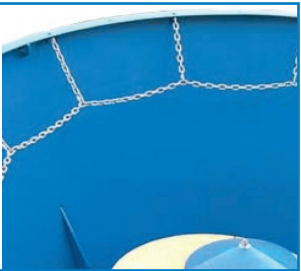


SIDE EXTENSION

Designed for durability and flexibility, 9 1/2 inch side extension includes rugged rubber side belting for 15% more capacity.

CHAIN HAY RETAINER

Bolted to the top of the mixer tub, a hay retainer helps guide dry hay inside the tub during mixing.



MIXING KNIVES

Install genuine Patz knives to manage long fiber in your ration. Pair Patz patented AR400 RAPTOR® bale knife with our AR400 or hardened Tungsten/Carbide serrated knives in a variety of sizes.

KNIFE OPTIONS

AR400 RAPTOR®
4 1/4, 4 3/4, 5 1/2, and 7 1/2 inch

AR400 or Tungsten/
Carbide Serrated
12 and 21 1/2 inch



REAR COMMODITY

Pre-mix commodities once and empty into a storage bin. Back mixer into narrow spaces for emptying, and streamline your mixing process.



SIDE DISCHARGE(S)

Side doors can be equipped with a chain conveyor discharge with collapsible steel sides. Available in hydraulic or manual operation.

SIDE CONVEYORS

Side discharge conveyors are 36 inch wide with choice of 36 inch or 54 inch lengths.



PATENTED MAGNET

This Patz Exclusive patented magnet is strong enough to pull tramp metal from the ration while mixing or feeding.


MAGNET OPTIONS

Tub Magnet
Magnet that is mounted into the tub wall.
Discharge Magnet
Attaches to inside of discharge shrouding.

1200 Series II Single Screw Vertical Mixer

Specifications



1200 Series II  Vortex®	U/M	420	500	615
Mixing Capacity w/ Extensions (9.25 in)	ft³/m³	490 (14)	570 (16)	690 (19.5)
Empty Weight	lbs (kg)	9,500 (4,309)	9,890 (4,486)	10,475 (4,751)
XH Empty Weight	lbs (kg)	11,186 (5,074)	11,743 (5,327)	12,373 (5,612)
Max Load @ 25 lb/ft³	lbs (kg)	10,500 (4,763)	12,500 (5,670)	15,375 (6,974)
Max Gross Weight	lbs (kg)	20,000 (9,072)	22,390 (10,156)	25,850 (11,725)
Mixer Width	in (m)	109 (2.8)		
Floor Thickness	in (mm)	3/4 (19)		
Sidewall Thickness	in (mm)	1/4 (6); XH 3/8 (9)		
Door Opening Height x Width (Front)	in (mm)	26 (660) x 42 (1,067)	30 (762) x 42 (1,067)	
Door Opening Height x Width (Side - 2 Locations)	in (mm)	39 (991) x XH 34 (864)		
Viewing Platform		Front; Right/Left Access		
Screw Flighting Thickness	in (mm)	5/8 (16) and XH 3/4 (19)		
Screw Height x Diameter	in (mm)	34 (864)/ 44 (1,118)/ 54 (1,372) x 108 (2,743)		
Knife Positions		7	9	9
Operating Speed	RPM	540 or 1,000	1,000	1,000
Drive Package		Direct/2-Speed Manual; 2-Speed Powershift; 6/20/21 - Spline		
Minimum PTO HP (Continuous Run)	HP	85	90	110
Trailer Type		Conventional Duals (4); Split Dual - Inline (4); Super Single Flotation (2)		
Scale System		4-Point		
Tires		(4) 245/70 R 19.5 Implement Tires or (2) 445/50R22.5 Flotation Tires		

OPTIONS

Side Extensions
- Rubber
Hay Retainer

Discharge Chute w/ or w/o Magnet
Discharge Conveyor
Tub Mounted Magnet

Selection of Indicators
- Digi-Star®,
- dinamica generale®
- Weigh-Tronix®

Camera Package
Ladder (Rear Location)
Planetary Cooling System
Hydraulic Control Center



CAUTION: Never operate Patz equipment without all shields and guards in place. **Safety Is No Accident.** Before operating any piece of equipment, be sure to read and understand the operator's manual. This manual should be kept with the machine at all times. Additionally, make sure all safety shields and devices are functioning properly and are securely in place. Specifications and prices subject to change without notice.