

800 SERIES II TRAILER SINGLE SCREW VERTICAL MIXERS



THE MOST TRUSTED MIXER THE MOST VALUED MIX

- ✓ **Consistent** TMR beyond demo and after the sale - precision feeding for service life.
- ✓ **Capacity** with Balanced Flow™ Technology - no dead spots at struck height!
- ✓ **Cleanout** minimizes residue carryover for balanced rations, batch integrity, and nutrient cost control.

FEEDINGSOLUTIONS
www.patzcorp.com

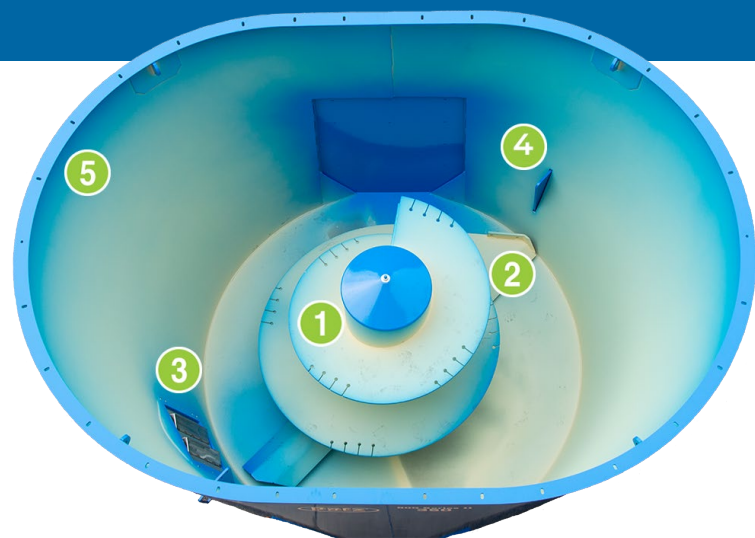
FEEDING IS BELIEVING!
Schedule a DEMO Today!

INVESTMENT FLEXIBILITY
Ask Dealer for Financing Details



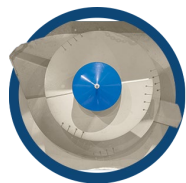
800 Series II Single Screw Vertical Mixer

BALANCED FLOW™ TECHNOLOGY

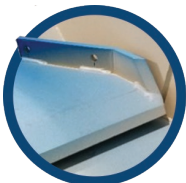


PROVEN, PATENTED PRODUCTIVITY

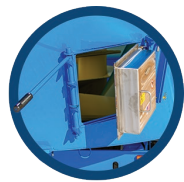
Patz exclusive design engineering balances horizontal processing and vertical mixing. The continuous, controlled motion ensures a thorough and consistent mix with superior clean-out.



1. Precision-fitted, AR400 - Component Tru Taper® screw creates the Patz signature *rolling-boil* for faster mixing and high-volume feed flow.



2. Welded, AR400 shear plow wing tight tolerance cleans the tub sidewall for maximum mixing action and cleanout with minimal torque.



3. The original, stainless steel tub-mounted magnet with patented, reticulum retention design removes tramp metal without restricting feed flow. Feed safer and inspect frequently with quick-opening access.



4. Reversible restrictor plates are located on front left and right rear of tub. Adjust in or out to control forage flow and particle size.



5. Surface-primed, overlapping steel tub-ends and sidewalls with reinforced exterior anchor and interior seam welds; sand-blasted and primer finish with high-gloss hardened, premium paint.



800 Series II Single Screw Vertical Mixer

FEED THE POTENTIAL™

THE PROFESSIONAL PRODUCER'S CHOICE IN TMR

Feed is 65% of operating costs, make every ingredient count with a consistent TMR from start to finish.

- Feed a wider variety of ingredients.
- Maximize dietary fiber with large squares & wet or dry standard and high-density round bales.
- Batch size flexibility for special needs or pre- and post-fresh groups.



UNLEASH THE TOTAL MIX POTENTIAL OF YOUR FEED, YOUR HERD, AND YOUR MANAGEMENT WITH PATZ VERTICAL MIXERS!



Gray arrows indicate direction of screw rotation.
Green arrows indicate Balanced Flow™ of feed



- Highest rated consistency throughout service life in the industry in independent TMR audits!
- Minimize sorting and reduce refusals with a palatable, well-blended TMR.
- Increase dry matter intake (DMI) with uniform theoretical length of cut (TLC).
- Improve TDN utilization by preserving physically effective fiber (peNDF) integrity.
- Ensure precision feeding program accuracy with Patz superior cleanout!

800 Series II Single Screw Vertical Mixer

Standard Features

Units Available: 270 and 350 cu. ft. (7.65 and 9.91 m³)



HIGH EFFICIENCY DRIVETRAIN ENGINEERING

Overload Protected, Poly-Sheilded ASABE/ISO/CE Safety Guarded/Harnessed Drive-Line

1 Primary Drive-line

- 6-Spline 1 3/8 inch (35 mm) PTO
- Serviceable shear clutch protects PTO from mixer shock loads

2 Direct drive 540 RPM PTO with hinge-guarded, framed-mounted flange bearing to minimize vibration

3 Independent secondary driveline

4 Heavy duty 90° planetary gearbox backed by a 5-year prorated warranty

5 Independent oil reservoir with dip-stick cap to monitor planetary gearbox oil level, centrally located for routine maintenance

DURABLE TUB AND TRAILER DESIGN

6 1/2 inch (13 mm) - Reinforced, Welded Gusset Top Ring

7 1/4 inch (6 mm) - Overlapping, surface-primed, 58-80K PSI Ultimate Tensile Strength (UTS) sidewalls reinforced with exterior anchor and interior seam welds, finished with high-gloss hardened, premium paint

8 Reversible restrictor plates are located on front left and right rear of tub - adjust in or out to control forage flow and particle size

9 Integrally formed, reinforced tub floor provides the solid structure for mixer construction minimizing flex and fatigue:

- 1/2 inch (13 mm) - Solid Steel **Base Plate** with Beveled Sidewall Foundation Joist
- 1/2 inch (13 mm) Welded Steel **Cantilever Cross Members** evenly distribute orbital mixing torque
- 3/4 inch (19 mm) Welded Steel **Sub-Floor** forms a rigid 1 1/4 inch (32 mm) Planetary Gearbox Mount

10 3-Point **Weigh Bar System** anchors tub to trailer for accuracy, serviceability, and reliability

11 12 1/2 inch (6.5 mm) formed plate steel unibody with reinforced tapered apex tongue hitch

12 **Two Tubeless Tires**, rib or turf, provide smooth transport over rough terrain

13 Recessed LED taillights with 7-pin ISO connector for safe, visible transport

Some variations may apply to standard and optional equipment for each unit size. Please refer to specifications page for more information.

800 Series II Single Screw Vertical Mixer

Optional Features

SIDE DISCHARGE(S)

Side doors can be equipped with a chain conveyor discharge with collapsible steel sides. Available in hydraulic or manual operation.

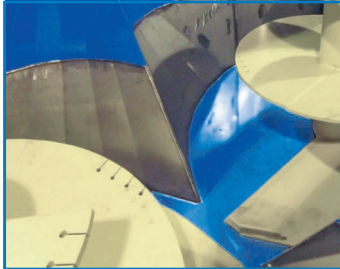
SIDE CONVEYORS

Side discharge conveyors are 36 inch wide with choice of 36 inch or 54 inch lengths.



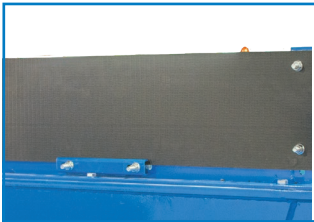
TUB LINER

Choice of 3/16 inch thick steel or 11 gauge stainless steel for additional wear protection of mixer tub.



SIDE EXTENSION

Designed for durability and flexibility, 9 1/2 inch side extension includes rugged rubber side belting for 15% more capacity.



CHAIN HAY RETAINER

Bolted to the top of the mixer tub, a hay retainer helps guide dry hay inside the tub during mixing.



REAR COMMODITY

Pre-mix commodities once and empty into a storage bin. Back mixer into narrow spaces for emptying, and streamline your mixing process.



MIXING KNIVES

Install genuine Patz knives to manage long fiber in your ration. Pair Patz patented AR400 RAPTOR® bale knife with our AR400 or hardened Tungsten/Carbide serrated knives in a variety of sizes.

KNIFE OPTIONS

AR400 RAPTOR®
4 1/4, 4 3/4, 5 1/2, and 7 1/2 inch

AR400 or Tungsten/
Carbide Serrated
12 and 21 1/2 inch



PATENTED MAGNET

This Patz exclusive patented magnet is strong enough to pull tramp metal from the ration while mixing or feeding.

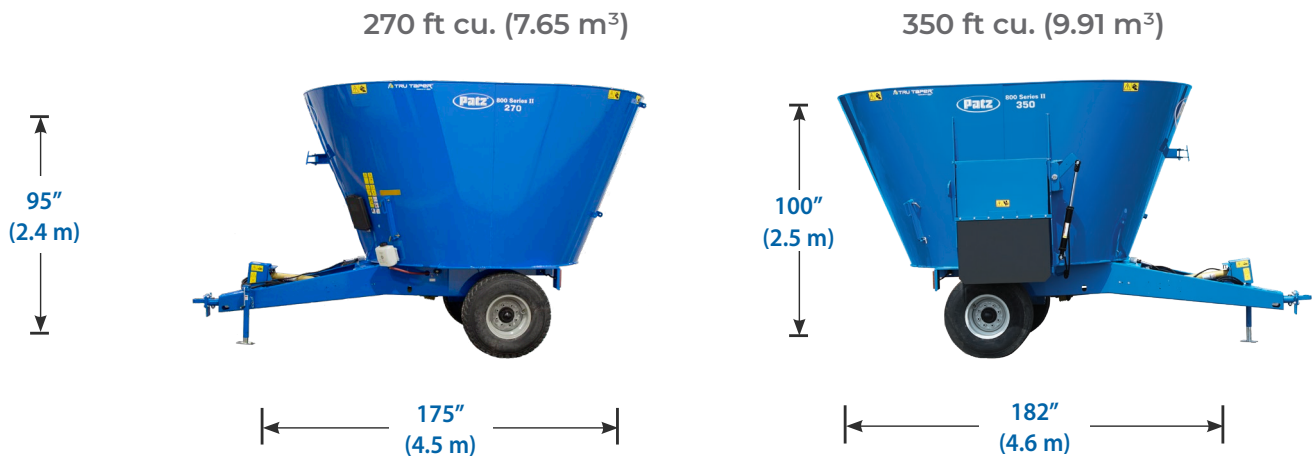



MAGNET OPTIONS

Tub Magnet
Magnet that is mounted into the tub wall.
Discharge Magnet
Attaches to inside of discharge shrouding.

800 Series II Single Screw Vertical Mixer

Specifications



800 Series II  Tru Taper®	U/M	270	350
Mixing Capacity w/ Extensions (9.25 in)	ft ³ /m ³	315 (9)	400 (11)
Weight	lbs (kg)	5,370 (2,435.8)	5,750 (2,608)
Max Load @ 25 lb/ft ³	lbs (kg)	6,750 (3,062)	8,750 (3,969)
Max Gross Weight	lbs (kg)	12,120 (5,498)	14,500 (6,577)
Floor Thickness	in (mm)	1/2 (13)	
Sidewall Thickness	in (mm)	1/4 (6)	
Door Opening Height x Width (Rear)	in (mm)	30 (762) x 39 (991)	
Door Opening Height x Width (Side - 2 Locations)	in (mm)	39 (991) x 34 (864)	39 (991) x 34 (864)
Screw Flighting Thickness	in (mm)	1/2 (13)	
Screw Height x Diameter	in (mm)	34 (864)/ 44 (1,118) x 86 (2,184)	
Knife Positions		5	7
Operating Speed	RPM	540	
Drive Package		1-3/8" - 6 Spline Direct Drive	
Minimum PTO HP (Continuous Run)	HP	55	65
Trailer Type		Unibody	
Scale System		3-Point	
Tires		(2) 320/70 R 15 Tubeless (Rib or Turf)	

OPTIONS

Vertical Mixer Knives

- Serrated
- Raptor

Side Extensions

- Rubber

Hay Retainer

- Discharge Chute w/ or w/o Magnet
- Discharge Conveyor
- Tub Mounted Magnet

Selection of Indicators

- Digi-Star®,
- dinamica generale®
- Weigh-Tronix®

Camera Package

- Ladder (Rear Location)
- Planetary Cooling System
- Hydraulic Control Center



CAUTION: Never operate Patz equipment without all shields and guards in place. **Safety Is No Accident.** Before operating any piece of equipment, be sure to read and understand the operator's manual. This manual should be kept with the machine at all times. Additionally, make sure all safety shields and devices are functioning properly and are securely in place. Specifications and prices subject to change without notice.