

# FULL PRODUCT SHOWCASE



Manufactured by Patz Corporation, a  
Wisconsin-based, family-owned company.







## VERTICAL TMR MIXERS

A total mixed ration (TMR) is created when ingredient feed particles fall together simultaneously. A true TMR requires engineering that eliminates obstacles and dead spots without sacrificing mix performance. Balanced Flow™ Technology creates the Patz signature “rolling boil” with a precision fitted screw inside a vertical relief proportional tub. Feed is processed along the sidewall and pulled away from the tub wall base. Lifting up the screw center, the feed then falls, and mixes at the tub end walls and patented contoured baffles. The Balanced Flow™ created allows the feed to mix uniformly together without

crushing ingredients. Restrictor plates separate sidewalls and end walls to adjust the mixing cavity capacity.

Patz Corporation's Balanced Flow™ Technology ensures a consistent TMR in small and large batches when mixing a wide variety of conventional and alternative ingredients. From long fiber to the finest concentrates, Patz TMR is ***balanced to the last bite.***

Our vertical mixers offer application adaptability with a complete range of vessel capacities, configurations, and discharge options.

- Working Capacities: 140 - 1,800 cu. ft. (11.64 - 51 m³)
- Compost quickly with single, twin, or triple auger configurations
- Direct finished compost where needed with customized door options
- Stationary unit drive packages in high and low voltages with Variable Frequency Drive control centers
- Towed PTO trailer models are a must for larger units, facilities, and applications







**Chain & Flite Conveyor options offer steep elevation volume in confined spaces.**

- 25 – 100 ft (30m) maximum length
- 81 ft<sup>3</sup> per minute (44 m per hour)
- 40° linear elevation
- 22° incline elbow
- 1 - 3 HP for 75 fpm
- 10" to 16" (25.4 to 40.6 cm) troughs

**CONVEYORS/FEEDERS**

No two conveying applications are alike. Patz offers 14 intermediate, distribution, and cross-conveyor platforms with options in customization, reliability, and capacity. Chain-and-flite, belt-trough, and belt-plow-off

**Belt Trough Conveyor options offer efficient horizontal and inclined transfer in linear conveying.**

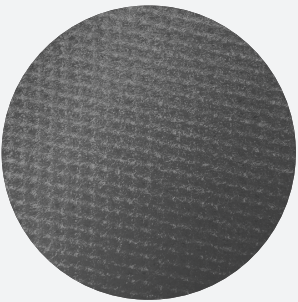
- 25 – 400 ft length (reversible up to 75 ft)
- 98 - 209 ft<sup>3</sup>/min (1600 - 3700 lbs)
- 30° maximum incline
- 1 - 3 HP for 65 - 370 fpm
- 12" to 36" (30.5 to 91.4 cm) belts

applications move feed and materials using innovation and versatility. Our light conveyors will efficiently integrate your farm input and output feed and waste streams.

**Moveable Plow-Off and Distribution Conveyors create windrows, fill storage bins and bays, or load transport. Discharge by side, section, or direction.**

- 25 – 400 ft length (reversible up to 75 ft)
- 85 - 180 ft<sup>3</sup> (950 -3250 lbs)/min
- 30° maximum incline
- 1 - 7½ HP drive for 65-325 fpm
- 12" to 24" (30.5 to 60.9 cm) belts

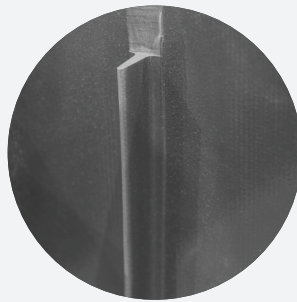
**PVC Belting Options Include:**



Low-Stretch Smooth



Textured



Cleated





## CHOPPERS

The Patz 9427 Chopper is great for processing feedstuffs, bedding, and brush mulch. Chopper grate is controlled by a single handle with 7 positions for varying length of cut.

A rotating drum feeds the powered rotor of 19 blades. The four-point, double-edged Quadra-Shark® Blades are a Patz exclusive product that reverse for longer service life.

- Two styles: portable and stationary units
- Portable units have side discharge with 13 HP gasoline engine
- Stationary units have bottom discharge with 3, 5, or 10 HP electric drive package
- All 9427 choppers come standard with a Class ABC rated fire extinguisher



Single Auger Ring Drive



Ring Drive



Surface Drive

## SILO UNLOADERS

Our silo unloaders are designed for high-volume delivery for the toughest conditions. Feed fast and reduce labor costs with our adjustable diameter silo unloaders. Available with auger or gathering chain feed removal.

Each machine offers easy installation in new or existing silos for same day operation.

### RD-2200 Ring Drive

- Fits silos 12' – 24' (3.7 – 7.3 m) in diameter
- 7½ or 10 HP single or 3 phase motors
- Automatic system for raising or lowering ring

### 98C Surface Drive

- Fits silos 12' – 30' (3.7 – 9.1 m) in diameter
- 7½ or 10 HP single-phase motor or 10 HP 3-phase motor
- Depth-of-cut control with counterweight for even feed flow

### A1 Single Auger Ring Drive Silo Unloader

- Fits silos 12' – 24' (3.7 – 7.3 m) in diameter
- 7½ or 10 HP motors
- Feed removed by auger
- Optional hexapod support system with highest lift in the industry





## 400 GUTTER CLEANER

The machine that started it all and put Pound, Wisconsin on the map.

The Patz Gutter Cleaner system has been used by farmers worldwide since 1948!

- Move +50 tons per hour at +40 ft<sup>3</sup> (1.2 m<sup>3</sup>) per minute
- Planetary or reducer drive package options: 2 – 7½ HP (1.5 – 5.6 kw)
- Product stream speed options: 12 – 36 fpm (3.7 – 11 mpm)

### 360° Flexible Installation and Layout

Installs in current barn or new facility.

- 400 ft (122 m) standard circuit
- Guarded reverse curves and corners up to 180°
- Incline or decline elbow channeling up to 22°
- Above-floor steel troughs or recessed concrete gutters
- Trough covers, trap doors, tapered sidewall, and liner options
- HSLA1 corrosion resistant, powder coated steel with a 10-year pro-rated warranty



## THE ORIGINAL Hook and Eye Chain Link

Patz Chain is true forging. . .not a casting!

- Forged from rigidly spec'd alloy steel for premium wear resistance
- Precision, closed-die forging with exacting tolerances ensure uniform linkage and smooth operation
- Heat-treated and hardened for maximum impact and fatigue strength
- Industry leading 15-year pro-rated (5-year full) extended written warranty

### Flite Options

- 447 Low Flite made of 2"x 2" (51 mm) ¼" angled steel bar
- 467 High Flite is laser cut ¼" (6.35 mm) steel with 90° taper fold rising to 4" (102 mm) end
- Customized flite widths of 15" – 20" (38 – 50 cm) in ½" increments for in-floor formed gutters
- Flites may be spaced at 12", 18", and 24" (305, 457, 610 mm) intervals for adjustable conveying capacity
- Powder coated to limit corrosion

**For the industry leader in gutter cleaner chain for over 70 years, choose the chain known by name - the link stamped PATZ.**

Channel-fitted leading edge allows wall-to-wall conveying

XL rectangular wear shoe reduces leading edge wear and floor grooving



Robot welded for consistent chain tracking and uniform drive point contact





**Hydraulic Piston Pump**



**Vertical Pit Pump**



**Vertical Electric Prop Agitator**



**Submersible Pump**

## MANURE PUMPS

Patz high-efficiency pumps transfer, agitate, and transfer slurry, manure, and sand-laden manure to secondary locations or storage areas with minimal horsepower. Engineered for high-volume, operating at low pressure enables precision flow control and ensures line integrity and system safety.

### Hydraulic Piston Pumps:

- Transfer solids-laden slurry from 150 to 2000 ft (45 - 600 m)
- Largest diameter stainless steel cylinder in the industry
- Utilizes 3, 5, or 7 HP hydraulic power-pack to pump 50 - 190 gpm (10 m<sup>3</sup> - 44 m<sup>3</sup> per hour)

### Vertical Pit Pumps:

- Pump and agitate up to 4000 gpm (15 m<sup>3</sup>) with centrifugal impeller pumps
- Designed for pit depths of 3 to 12 ft (1-3.7 m)
- Intake housing, impeller, and sheer plate are made of AR400 steel

- Drive packages sized from 20 - 60 HP, or tractor PTO
- Rotate up to 90° with agitation ports

### Vertical Electric Prop Agitator (VEPA):

- Pit depths from 6' - 16' (2 - 5 m)
- Agitation capacity of 9,000 gallons (34m<sup>3</sup>) per minute
- Minimal HP requirement (7½ - 15 HP)
- 20" propeller rotates 180°

### Submersible Pump:

- Industrial duty 1/2 HP pump at 20 - 160 gpm (75 - 600 l/min)
- Remove excess liquid/slurry from manure pits



**IntelliChain® Alley Scrapers**



**IntelliCable® Alley Scrapers**



**IntelliShuttle® Cable Box Scraper**



**IntelliShuttle® II Chain Box Scraper**

## ALLEY SCRAPER SYSTEMS

The SmartClean® System offers intelligence and durability in automated floor maintenance. The IntelliChain®, IntelliCable®, and IntelliShuttle® scraper systems are engineered for continuous cleaning, long service life, and low maintenance. Sweep barn alleys clean without disrupting cows.

The Sentinel control system is completely programmable with Manual, Continuous, and Automatic modes up 12 daily cycles. Additional features include speed control, safety stop/reverse, and maintenance management.

- Maintain service alleys or walkways up to 500 ft (155 m) long and 16 ft (4.9 m) wide
- Manage slurry canals and catchments up to 400 ft at 36" x 36"
- Operates on drive circuit of recessed cable, chain, or rope
- Customizable cleaning head
- Energy efficient planetary drives with ¾ HP motor
- Adapt drives to linear towed material moving application





Patz Corporation • Pound, Wisconsin USA  
Ph: (920) 897-2251 • [info@patzcorp.com](mailto:info@patzcorp.com) • [www.patzcorp.com](http://www.patzcorp.com)

