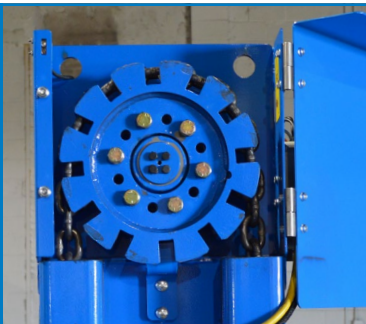


IntelliChain® II HD Alley Scraper DRIVE UNIT

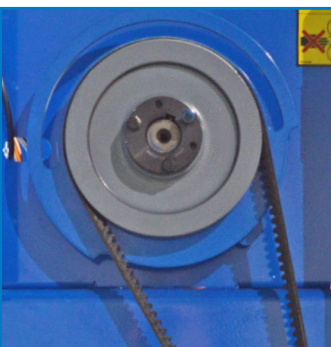
POCKET SPROCKET

Cradles the chain in hardened plate steel, effectively driving it in forward or reverse. Connected to the reducer on a splined shaft, the pocket sprocket is easy to replace (sprockets available in five different colored stages for easy identification).



MANUAL HYDRAULIC TENSIONER

Tensioning system with hydraulic hand pump and cylinder to manually tension chain.



DRIVEN PULLEY

Takes power from motor to planetary to pocket sprocket which, in turn, drives the chain.

PATENTED AUTOMATIC TENSIONER

Automatic tensioner system adjusts tension during machine operation avoiding overtensioning by other systems.



MOTOR PULLEY

A common single belt and pulley design for power transfer from motor to planetary gearbox. Large motor pulley designed for greater belt life.



FOOT WHEELS

Heavy-duty foot wheel housing redesigned for centered, stationary upright wheel chain tracking and easy service. Wheels surfaced in hardened plate steel to maximize service life without excess chain wear.

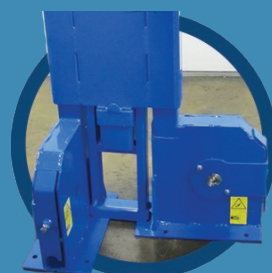


DRIVE UNIT CONFIGURATIONS (II & II HD)

Can be placed in straight, corner, parallel, or offset mounting formations for layout flexibility and space savings (see Drive Unit Configurations below). Steel housing encloses drive unit corner wheels for safety and protection. Corner wheels feature hardened axle and nylon bushings for longer life.



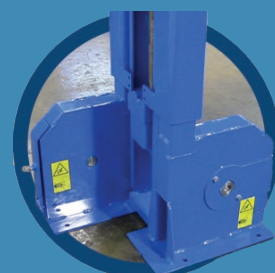
"I" (Straight) Position
Most basic setup.



"L" (Corner) Position
This setup positions the drive unit in the alley.



"U" (Parallel) Position
Provides space savings and locates the drive unit in a corner out of basic travel routes.



"Z" (Offset) Position
Provides space savings by narrowing the space required for the drive. Can be used instead of "straight" position.

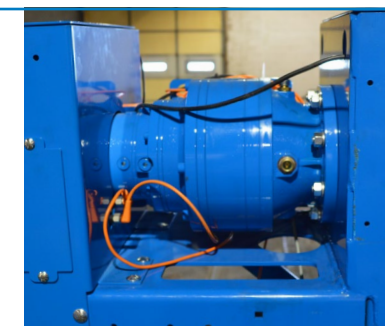


ELECTRIC MOTOR

Three-phase, 1 HP electric motor efficiently powers the drive unit. (IntelliChain® II HD Alley Scraper will operate on single- or three-phase input power.)

HEAVY DUTY PLANETARY

Gearbox is more energy-efficient, uses less horsepower than conventional gearboxes, and provides quiet operation.



PATZ CHAIN

is made of high-quality 1/2" (13 mm) hardened steel to withstand the stress and friction of contact between links and concrete alleys. To ensure you always receive genuine Patz chain, every sixth link is imprinted with 'PTZ.' Patz chain can be ordered in a variety of lengths, including custom lengths in one-foot increments for splice-free installation.

TOTAL CIRCUIT UP TO 1,800 ft. (549 m)