



# MATERIAL HANDLING SOLUTIONS

Manufactured by Patz Corporation, a  
Wisconsin-based, family-owned company







## THE ORIGINAL Hook and Eye Chain Link

Patz Chain is true forging. . .not a casting!

- High strength spec'd alloy steel for premium fatigue resistance
- Precision, closed-die forging with exacting tolerances ensure uniform linkage and smooth operation
- Heat-treated hardening for maximum impact and wear resistance
- Industry leading 15 year pro-rated (5 year full) extended written warranty

### Flite Options

- 447 Low Flite made of 2"x 2" (51 mm) ¼" angled steel bar
- 467 High Flite is laser cut ¼" (6.35 mm) steel with 90° taper fold rising to 4" (102 mm) end
- Customized flite widths of 15" – 20" (38 – 50 cm) in ½" increments for in-floor formed gutters
- Flites may be spaced at 12", 18", and 24" (305, 457, 610 mm) intervals for adjustable conveying capacity
- Powder coated to limit corrosion

For the industry leader in drag chain conveying for over 75 years, choose the chain known by name - the link stamped PATZ.

Channel-fitted leading edge allows wall-to-wall conveying

XL rectangular wear shoe reduces leading edge wear and floor grooving



Robot welded for consistent chain tracking and uniform drive point contact



## MATERIAL MOVERS

The first in fiber and solid particle waste handling equipment. Move processed biomass, recycling, mineral ores, metal shavings, and more with 24/7 reliability.

- Move +50 tons per hour at +40 ft<sup>3</sup> (1.2 m<sup>3</sup>) per minute
- Built from HSLA<sup>1</sup> corrosion resistant, powder coated steel with a 10 year pro-rated warranty
- Reducer Style Drive Types Available: Planetary, 203 Gearbox, Roller Chain
- Planetary or reducer drive package options: 2 – 7½ HP (1.5 – 5.6 kw)
- Product stream speed options: 12 – 36 fpm (3.7 – 11 mpm)

<sup>1</sup>High Strength, Low-Alloy Steel

### 360° Flexible Installation and Layout

Route underneath processing machines and through systems facility-wide.

- 400 ft (122 m) standard circuit
- Guarded reverse curves and corners up to 180°
- Incline or decline elbow channeling up to 22°
- Above-floor steel troughs or recessed concrete gutters
- Options: Trough covers, trap doors, tapered sidewalls, and liners

### Brake Motor Features (on Planetary Drive Package)

- Increased safety. Safety feature stops back spin and allows tension to be released in a controlled manner
- Extends link life
- Minimizes link separation over open pit and at drive unit





**Chain & Flite Conveyor options offer steep elevation volume in confined spaces**

- 25 – 100 ft (30 m) maximum length
- 81 ft<sup>3</sup>/min (44 m<sup>3</sup>/hour)
- 40° linear elevation
- 22° incline elbow
- 1 - 3 HP for 75 fpm
- 10" - 16" (25.4 - 40.6 cm) troughs

**Belt Trough Conveyor options offer efficient horizontal and inclined transfer in linear conveying**

- 25 – 400 ft length (reversible up to 75 ft)
- 98 - 209 ft<sup>3</sup>/min (167 - 355m<sup>3</sup>/hr)
- 30° maximum incline
- 1 - 3 HP for 65 - 370 fpm
- 12" - 36" (30.5 - 91.4 cm) belts

**Moveable Plow-Off and Distribution Conveyors create windrows, fill storage bins and bays, or load transport containers (discharge by side, section, or direction)**

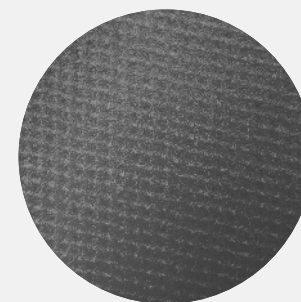
- 25 – 400 ft length (reversible up to 75 ft)
- 85 - 180 ft<sup>3</sup>/min (144 - 305 m<sup>3</sup>/hr)
- 30° maximum incline
- 1 - 7½ HP drive for 65 - 325 fpm
- 12" - 24" (30.5 - 60.9 cm) belts

**CONVEYORS**

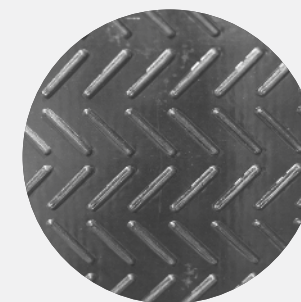
No two conveying applications are alike. Patz offers 14 intermediate, distribution, and cross-conveyor platforms with options in customization and capacity.

Chain & flite, belt trough, and belt plow-off applications move materials using innovation and versatility. Our light industrial conveyors will efficiently integrate your factory input and output product streams.

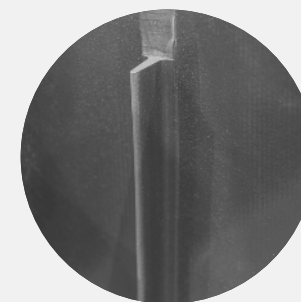
**PVC Belting Options Include:**



Low-Stretch Smooth



Textured



Cleated





Note: Guarding has been removed for illustration purposes only.



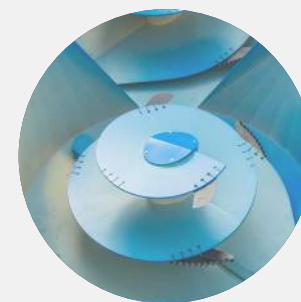
## VERTICAL MIXERS

Patz vertical mixers with exclusive Balanced Flow™ Technology are engineered to produce a homogeneous mixture of materials efficiently and quickly. These mixers process food waste, bio-solids, wood by-products, and more.

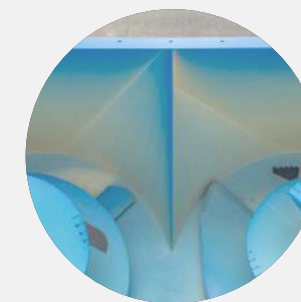
Our vertical mixers offer application adaptability with a complete range of vessel capacities, configurations, and discharge options. Meter, mix, process, and compost with this machine. Available as stationary, trailer, or truck, top-loading, live-bottom bins.

- Working Capacities: 140 - 1,800 cu. ft. (11.8 - 51.0 m<sup>3</sup>)
- Compost quickly with single, twin, or triple auger configurations
- Direct finished compost where needed with customized door options
- Stationary unit drive packages in high and low voltages with Variable Frequency Drive control centers
- Towed PTO trailer models are a must for larger units, facilities, and applications

### Features of Patz Mixers



High Capacity Augers  
for a Consistent Mix



Contoured Baffles  
for a Balanced Flow



Patented Magnet  
for a Cleaner Mix



**CAUTION:** Never operate Patz equipment without all shields and guards in place. **Safety Is No Accident.** Before operating any piece of equipment, be sure to read and understand the operator's manual. This manual should be kept with the machine at all times. Additionally, make sure all safety shields and devices are functioning properly and are securely in place. Specifications and prices subject to change without notice.





**IntelliChain®  
Alley Scraper**



**IntelliCable®  
Alley Scrapers**



**IntelliShuttle®  
Cable Box Scraper**



**IntelliShuttle® II  
Chain Box Scraper**

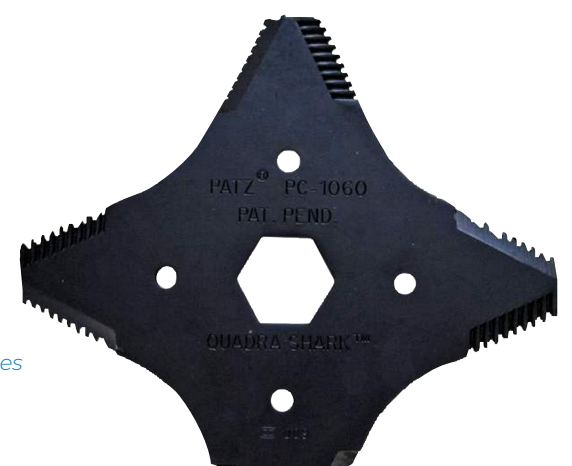
## CHOPPERS

The Patz 9427 Chopper is a professional landscaper, caretaker, and recycler's processor of choice. Chop straw, plant fiber, and other biomass for landscape and compost applications. Great for micro and light industrial recycling of alternative materials including newspapers, wood shavings, plastics, and more. Perfect for zoological applications when processing feedstuffs, bedding, and brush mulch.

Chopper features a rotating drum feeding the powered rotor of 19 blades. The four-point, double-edged Quadra-Shark® Blades are a Patz exclusive product that reverse for longer service life. Add a mulching screen for additional processes.

The 9247 Chopper is available in two different styles. Portable units with side discharge broadcast applications powered by a 13 HP Honda gasoline engine. Stationary units with a bottom discharge are powered by an electric motor in 3, 5, or 10 HP drive packages.

featuring  
Quadra-Shark® Blades



## FLOOR SCRAPER SYSTEMS

The Patz Floor Scraper System offers intelligence and durability in automated floor maintenance. The IntelliChain®, IntelliCable®, and IntelliShuttle® scraper systems are engineered for continuous cleaning, long service life, and low maintenance. Sweep overspill and keep aisles clean while you continue working.

The Sentinel control system is completely programmable with Manual, Continuous, and Automatic modes (up to 12 daily cycles). Additional features include speed control, safety stop/reverse, and maintenance management.

- Maintain service alleys or walkways (a total circuit length up to 3,600 ft)
- Manage slurry canals and catchments up to 400 ft at 36" x 36"
- Operates on drive circuit of recessed cable, chain, or rope
- Customizable cleaning head
- Energy efficient planetary drives with up to 3 HP motors
- Adapt drives to linear towed material moving application





**Hydraulic Piston Pump**



**Vertical Pit Pump**



**Submersible Pump**



**Vertical Electric Prop Agitator**

## SLUDGE, SLURRY, AND SUMP PUMPS

Patz high-efficiency pumps transfer, agitate, and feed processing and treatment systems with minimal horsepower. Our pumps handle a wide variety of liquid feedstock and waste management applications. Engineered for high-volume, while operating at low pressure enables precision flow control and ensures line integrity and system safety.

**Hydraulic Piston Pumps:** Transfer solids-laden slurry from 150 - 2000 ft (45 - 600 m) with the largest diameter stainless steel cylinder

in the industry. Utilizes 3, 5, or 7 HP hydraulic power-pack to pump 50 - 190 gpm (10 - 44 m<sup>3</sup> per hour).

**Vertical Pit Pumps:** Pump and agitate up to 4000 gpm (15 m<sup>3</sup>) with Patz centrifugal impeller pumps. Designed for tank or pit depths of 3 - 12 ft (1-3.7 m). Intake housing, impeller, and sheer plate are all made of AR400 (abrasion resistant) steel. Drive packages sized from 20 - 60 HP, or tractor PTO. Rotate up to 90° with agitation ports.

**Submersible Pump:** Service Material Mover sump with an industrial duty 1 HP pump at 20 - 160 gpm (75 - 600 /min) to remove excess liquid or slurry from drag-chain conveyor applications.

**Vertical Electric Prop Agitator (VEPA):** Keep solids suspended for homogeneous processing and feed stocks flowing with VEPA. Available for pit or tank depths from 6 - 16 ft (2 - 5 m). Agitation capacity up to 9,000 gallons (34 m<sup>3</sup>) per minute with minimal horsepower requirements of 7½ - 15 HP. Control agitation by rotating the 20" (50 cm) propeller unit up to 180°.





*Note: Guarding has been removed for illustration purposes only.*



## CROSS GUTTER MANURE AUGERS

The MA-12 Cross Gutter Manure Auger is the most optimized manure-conveying system available. It has a total channel length of 400 ft with interfaced tandem drives.

The MA-12 is ideally designed as a shallow cross gutter option for alley scraper drop zones up to 200 ft in length on a single drive. For longer gutters, augers may be installed in a tandem pusher-puller configuration. The 12" diameter flighting is optimal for an 18" x 18" channel.

Drive package options offer installation flexibility for above pit (dry) or immersed (wet) operation.

FEATURES include:

- 12' standard auger sections available in 1' increments
- 3/8" (9.5mm) continuous coil steel flighting
- 3" (76mm) diameter hardened steel coupling shaft
- Patz exclusive three-pin saddle-clamp coupling for easy service and long-lasting stable auger sections
- Coupled hanger with seated UHMW polyethylene symmetrical split sleeve bearing



# Made to Order

Contract Manufacturing has been an integral part of Patz Corporation since 1984. Let Patz help control your costs by offering a single source for all your manufacturing needs. Gain instant access to a broad range of manufacturing capabilities from start of production design to delivery.

Visit us online!

[manufacturing.patzcorp.com](http://manufacturing.patzcorp.com)



Laser Cutting



Metal Fabrication



Machining



Welding Services



Powder Coating



Assembly





## Patz Corporation offers support **before and after the sale.**

The goal of Technical Support is for our customers to adapt Patz technology for the entire spectrum of Agricultural, Industrial, and Environmental applications with confidence. We offer:

### **In-House Support**

- Experienced sales team assists with custom layout/installation quotations
- Dedicated customer support tracks purchases from order to delivery
- Skilled Technical Support staff assist with in-depth product knowledge from design to installation
- Expert engineering department manages product improvements, innovations, and updates.







Patz Corporation • Pound, Wisconsin USA  
Ph: (920) 897-2251 • [info@patzcorp.com](mailto:info@patzcorp.com) • [www.patzcorp.com](http://www.patzcorp.com)

